



Acelo Nurse Call System  
CATALOGUE

Australia and New Zealand

# Acelo Catalogue

<b>Product</b>	<b>Acelo Desk Mounted Nurse Station Console (Speech)</b>
<b>Description</b>	<p>Touch screen nurse call display for nurse stations. This item will display events for the associated system and is used by healthcare professionals to monitor the nurse call system, including 2-way speech (VOIP).</p> <p>This device is suitable for desk mounting only and is supplied complete with a desk-stand support and a staff handset. The Nurse Station Console requires an IP PoE (Power over Ethernet) data connection and is powered via PoE from the data network.</p>
<b>Part No.</b>	<b>200028</b>



<b>Product</b>	<b>Acelo Wall Mounted Nurse Station Console (Speech)</b>
<b>Description</b>	<p>Touch screen nurse call display for nurse stations. This item will display events for the associated system and is used by healthcare professionals to monitor the nurse call system, including 2-way speech (VOIP).</p> <p>This device is suitable for wall mounting only and is supplied complete with a wall mounting bracket and a staff handset. The Nurse Station Console requires an IP PoE (Power over Ethernet) data connection and is powered via PoE from the data network.</p>
<b>Part No.</b>	<b>200026</b>



<b>Product</b>	<b>Acelo Desk Mounted Nurse Station Console (Non-Speech)</b>
<b>Description</b>	<p>Touch screen nurse call display for nurse stations. This item will display events for the associated system and is used by healthcare professionals to monitor the nurse call system.</p> <p>This device is suitable for desk mounting only and is supplied complete with a desk-stand support and a staff handset. The Nurse Station Console requires an IP PoE (Power over Ethernet) data connection and is powered via PoE from the data network.</p>
<b>Part No.</b>	<b>200027</b>



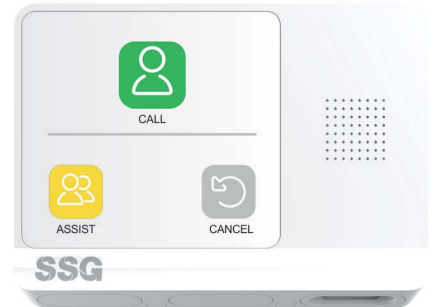
<b>Product</b>	<b>Acelo Wall Mounted Nurse Station Console (Non-Speech)</b>
<b>Description</b>	<p>Touch screen nurse call display for nurse stations. This item will display events for the associated system and is used by healthcare professionals to monitor the nurse call system.</p> <p>This device is suitable for wall mounting only and is supplied complete with a wall mounting bracket and a staff handset. The Nurse Station Console requires an IP PoE (Power over Ethernet) data connection and is powered via PoE from the data network.</p>
<b>Part No.</b>	<b>200025</b>



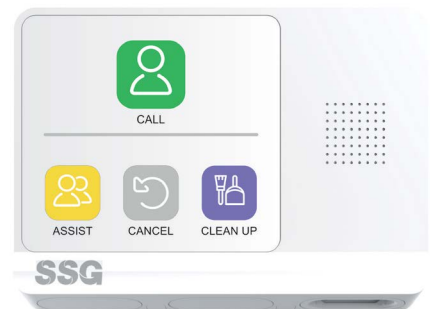
<b>Product</b>	<b>Acelo Nurse Station Terminal Software</b>
<b>Description</b>	Software pack for a PC style Nurse Station Terminal (hardware provided by others).  This is a licenced software package for SSG Acelo only, covering the Nurse Station Terminal requirements only.
<b>Part No.</b>	<b>200057</b>



<b>Product</b>	<b>Acelo ANZ IP Patient Call, Assist and Cancel with 2-Way Speech Unit</b>
<b>Description</b>	For use within patient bed space, this is a full IP device with patient call, assist and cancel buttons. This item is typically located at the patient bedside (single bedrooms or at each bed on a multi-bed system) but could also be used in a treatment room or recovery room, where 2-way speech communication between patient and healthcare professional is required. This item requires an IP PoE Data Connection, it is powered via PoE from the data network.  Mounting requirements: UK BS 2-gang back box horizontally mounted.
<b>Part No.</b>	<b>200049</b>



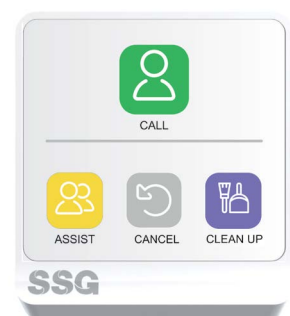
<b>Product</b>	<b>Acelo ANZ IP Patient Call, Assist, Cancel and Clean Up with 2-Way Speech Unit</b>
<b>Description</b>	For use within patient bed space, this is a full IP device with call, assist, cancel and clean up buttons. This item is typically located at the patient bedside (single bedrooms or at each bed on a multi-bed system) but could also be used in a treatment room or recovery room, where 2-way speech communication between patient and healthcare professional is required. This item requires an IP PoE Data Connection, it is powered via PoE from the data network.  Mounting requirements: UK BS 2-gang back box horizontally mounted.
<b>Part No.</b>	<b>200047</b>



<b>Product</b>	<b>Flush Back Box 2-Gang</b>
<b>Description</b>	UK British Standard 2-gang metal back box for the flush wall mounting of 2-gang units.
<b>Part No.</b>	<b>39101</b>



<b>Product</b>	<b>Acelo ANZ Local Bus Patient Call, Assist, Cancel and Clean Up Unit</b>
<b>Description</b>	This item is suitable for use in any room with patients & staff, requiring Call, assist, cancel and clean up buttons. This is a local bus unit and will be wired back typically to a Zone Controller Unit or an IP device mounted within the same area.  Mounting requirements: UK BS 1-gang back box.
<b>Part No.</b>	<b>200048</b>





<b>Product</b>	<b>Acelo ANZ Local Bus Patient Call, Assist and Cancel Unit</b>
<b>Description</b>	This item is suitable for use in any room with patients & healthcare professionals, requiring call, assist and cancel buttons. This is a local bus unit and will be wired back typically to a Zone Controller Unit or an IP device mounted within the same area.  Mounting requirements: UK BS 1-gang back box.
<b>Part No.</b>	200050



<b>Product</b>	<b>Acelo ANZ Local Bus Assistance and Cancel with Toilet Call Unit</b>
<b>Description</b>	This item is suitable for use in any bathroom/toilet with patients & healthcare professionals, requiring patient call, assistance and cancel buttons. This is a local bus unit and will be wired back typically to a Zone Controller Unit or an IP device mounted within the same area.  Mounting requirements: UK BS 1-gang back box.
<b>Part No.</b>	200070



<b>Product</b>	<b>Acelo ANZ Local Bus Catering, Transport, Clean Up and Cancel Unit</b>
<b>Description</b>	This item is suitable for use in any room requiring catering, transport, clean up and cancel buttons. This is a local bus unit and will be wired back typically to a Zone Controller Unit or an IP device mounted within the same area.  Mounting requirements: UK BS 1-gang back box.
<b>Part No.</b>	200055



<b>Product</b>	<b>Acelo ANZ Local Bus Call Unit</b>
<b>Description</b>	This item is suitable for use in any room with patients, requiring the call button only. The call would need to be cancelled via another unit. This is a local bus unit and will be wired back typically to a Zone Controller Unit or an IP device mounted within the same area.  Mounting requirements: UK BS 1-gang back box.
<b>Part No.</b>	200051



<b>Product</b>	<b>Acelo ANZ Local Bus Duress Unit</b>
<b>Description</b>	This item is suitable for use in any room requiring a duress button. This is a local bus unit and will be wired back typically to a Zone Controller Unit or an IP device mounted within the same area.  Mounting requirements: UK BS 1-gang back box.
<b>Part No.</b>	200052



<b>Product</b>	<b>Acelo ANZ Local Bus Cardiac and Cancel Unit</b>
<b>Description</b>	This item is suitable for use in any room with patients & healthcare professionals, requiring cardiac and cancel buttons. This is a local bus type of device and will be wired back typically to a Zone Controller Unit or an IP device mounted within the same area.  Mounting requirements: UK BS 1-Gang back box.
<b>Part No.</b>	<b>200053</b>



<b>Product</b>	<b>Acelo ANZ Local Bus Emergency and Cancel Unit</b>
<b>Description</b>	This item is suitable for use in any room with patients & healthcare professionals, requiring emergency and cancel buttons. This is a local bus unit and will be wired back typically to a Zone Controller Unit or an IP device mounted within the same area.  Mounting requirements: UK BS 1-gang back box.
<b>Part No.</b>	<b>200054</b>



<b>Product</b>	<b>Acelo ANZ Local Bus Cancel Unit</b>
<b>Description</b>	This item is suitable for use in any room with patients & healthcare professionals, requiring the cancel button only. It is used to cancel a call from another local device. This is a local bus unit and will be wired back typically to a Zone Controller Unit or an IP Call Point mounted within the same area.  Mounting requirements: UK BS 1-gang back box.
<b>Part No.</b>	<b>200046</b>



<b>Product</b>	<b>Acelo ANZ Local Bus Presence Unit</b>
<b>Description</b>	This item is suitable for use in any room with patients & staff, requiring confirmation of staff presence. This is a local bus unit and will be wired back typically to a Zone Controller Unit or an IP device mounted within the same area.  Mounting requirements: UK BS 1-gang back box.
<b>Part No.</b>	<b>200042</b>



<b>Product</b>	<b>Flush Back Box 1-Gang</b>
<b>Description</b>	UK British Standard 1-gang flush back box. For the flush wall mounting of 1-gang units.
<b>Part No.</b>	<b>39100</b>



<b>Product</b>	<b>Acelo ANZ Room Status Light With Tones</b>
<b>Description</b>	<p>The Room Status Light has 4 sections containing 3 LEDs per section. Multiple colour combinations are available utilising the RGB LEDs. Typically mounted in the corridor outside the room where there is an associated IP or local bus device. This is a local bus unit and will be wired back typically to a Zone Controller Unit or an IP device mounted within the same area.</p> <p>This device contains an 8ohm speaker to allow for adequate tone coverage in the area.</p> <p>Mounting requirements: UK BS 1-gang back box.</p>
<b>Part No.</b>	<b>200043</b>



<b>Product</b>	<b>Acelo ANZ Room Status Light Without Tones</b>
<b>Description</b>	<p>The Room Status Light has 4 sections containing 3 LEDs per section. Multiple colour combinations are available utilising the RGB LEDs. Typically mounted in the corridor outside the room where there is an associated IP or local bus device. This is a local bus unit and will be wired back typically to a Zone Controller Unit or an IP device mounted within the same area.</p> <p>Mounting requirements: UK BS 1-gang back box.</p>
<b>Part No.</b>	<b>200061</b>



<b>Product</b>	<b>Acelo ANZ Non-Speech Hand Unit with Nurse Call, Workflow and 2x Bedlight Controls</b>
<b>Description</b>	<p>Patient hand unit with facilities detailed above, for use with non-speech IP or local bus devices. Typically used by patients and connected into an IP or local bus device within the patient bed space.</p> <p>This item is designed to fit comfortably into the hand of the patient and is supplied complete with a 2-metre lead and magnetic jack socket.</p>
<b>Part No.</b>	<b>200040</b>



<b>Product</b>	<b>Acelo ANZ Speech Hand Unit with Nurse Call, Workflow and 2x Bedlight Controls</b>
<b>Description</b>	<p>Patient hand unit with facilities detailed above, for use with speech IP devices. Typically used by patients and connected into a speech IP device within the potential the patient bed space.</p> <p>This item is designed to fit comfortably into the hand of the patient and is supplied complete with a 2-metre lead and magnetic jack socket.</p>
<b>Part No.</b>	<b>200041</b>



<b>Product</b>	<b>Acelo ANZ Speech Hand Unit with Nurse Call, TV and 2 x Bedlight Controls</b>
<b>Description</b>	<p>Patient hand unit with facilities detailed above, for use with speech IP devices. Typically used by patients and connected into a speech IP device within the patient bed space.</p> <p>This item is designed to fit comfortably into the hand of the Patient and it is supplied complete with a 2-metre lead and magnetic jack socket. To enable TV control, you will need to purchase an Acelo TV programming fob and the TV control ancillary device.</p>
<b>Part No.</b>	<b>200074</b>



<b>Product</b>	<b>Acelo ANZ Non-Speech Hand Unit with Nurse Call, TV and 2 x Bedlight Controls</b>
<b>Description</b>	<p>Patient hand unit with facilities detailed above, for use with speech IP or local bus devices. Typically used by patients and connected into an IP or local bus device within the patient bed space.</p> <p>This item is designed to fit comfortably into the hand of the patient and it is supplied complete with a 2-metre lead and magnetic jack socket. To enable TV control, you will need to purchase an Acelo TV programming fob and the TV control ancillary device.</p>
<b>Part No.</b>	<b>200075</b>



<b>Product</b>	<b>Acelo Audio Interface Unit</b>
<b>Description</b>	<p>Wall Mounted within the patient bed space allowing for headphones or pillow speakers to be connected.</p> <p>This part is required for Hand Unit with Nurse Call, TV and 2x Bedlight controls. It provides TV sound to the patients bed space.</p>
<b>Part No.</b>	<b>200066</b>



<b>Product</b>	<b>Acelo TV Controller Unit</b>
<b>Description</b>	<p>This item is for mounting near the associated TV within the patients bed space and it provides interfacing between the TV and the patient hand unit.</p> <p>This part is required for use alongside the hand unit with nurse call, TV and 2x Bedlight controls.</p>
<b>Part No.</b>	<b>200064</b>



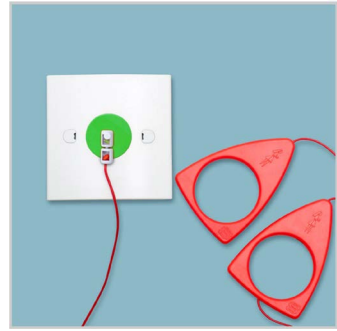
<b>Product</b>	<b>Acelo TV Programming Fob</b>
<b>Description</b>	<p>This item is required for setting-up the TV control during the commissioning process.</p> <p>Only one programming fobis required per site.</p>
<b>Part No.</b>	<b>200068</b>



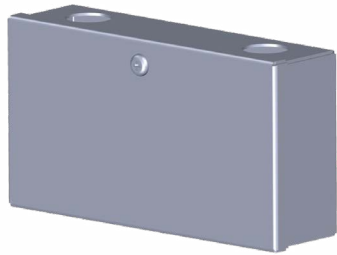
<b>Product</b>	<b>Acelo LED Corridor Scrolling Display</b>
<b>Description</b>	<p>Wall mounted device displaying nurse call notifications for healthcare professionals.</p> <p>Mounting requirements: This item is typically mounted in corridors at a high level, in clear view of healthcare professionals.</p>
<b>Part No.</b>	<b>89026</b>



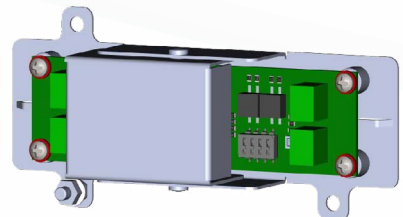
<b>Product</b>	<b>Acelo Remote Toilet Pull</b>
<b>Description</b>	Ceiling mounted pull cord device for patient use, within toilets and bathrooms. This item will be wired into a local bus assistance and cancel with toilet call unit.  Mounting requirements: UK BS 1-gang back box.
<b>Part No.</b>	<b>200069</b>



<b>Product</b>	<b>Acelo Bedlight Relay Box Mounted Interface</b>
<b>Description</b>	This item is mounted near the associated IP device within the patient bed space. The bedlight interface allows the patient hand unit to control an external lighting feature.  This part is required for bedlight control.
<b>Part No.</b>	<b>200032</b>



<b>Product</b>	<b>Acelo Bedlight Relay Chassis Mounted Interface</b>
<b>Description</b>	This item is mounted within a Bedhead Services Trunking unit near the associated Call Point at the patient bed space. The bedlight interface allows the patient hand unit to control an external lighting feature.  This part is required for bedlight control.  It must be housed within a bedhead services trunking unit, it is not suitable for stand alone wall mounting.
<b>Part No.</b>	<b>200033</b>



<b>Product</b>	<b>Acelo Large LED Display Interface</b>
<b>Description</b>	The Large LED Display Interface allows for the connection of a large LED display unit onto the Acelo Nurse Call System.  Typically positioned on the wall or ceiling, the interface will be located next to the Large LED Display to allow the active event information to be clearly displayed.
<b>Part No.</b>	<b>200062</b>



<b>Product</b>	<b>Acelo ANZ System Monitor</b>
<b>Description</b>	Each system requires one of these units for health checks at system level. The System Monitor electronics module health checks and controls the transfer of events from IP nodes on its own subnet. When the transfer of calls is activated the System Monitor receives a broadcast message from the ward and sends an individual unicast message to other system monitors on different subnets to initiate the call transfer. This device is suitable for wall mounting only and does not need to be accessed by any staff (there is no screen on this unit). The unit requires an IP PoE data connection, it is powered via PoE from the data network.
<b>Part No.</b>	<b>200056</b>





<b>Product</b>	<b>Acelo Zone Controller Unit</b>
<b>Description</b>	Local Bus Zone Controller has been designed to meet the specific needs of certain areas where IP speech devices are not required. This unit can connect up to 15 local bus call point devices with a maximum of 3 Room Status Lights. Four different Local Bus Runs are available. This device is suitable for wall mounting only and does not need to be accessed by any staff (there is no screen on this unit). The unit requires an IP PoE data connection, it is powered via PoE from the data network.
<b>Part No.</b>	<b>200034</b>



<b>Product</b>	<b>Acelo Nurse Station Console Speech Handset</b>
<b>Description</b>	Speech handset and connecting lead.  Available as a spare part only.
<b>Part No.</b>	<b>200036</b>



<b>Product</b>	<b>24 Port POE IP Switch, 24-Way IP Switch</b>
<b>Description</b>	Industry standard 24-Way PoE IP switch unit. Such as the Netgear GS728TPv2.  The 24-Way PoE IP switch will form part of the data network required for Acelo nurse call systems.  This item requires 230v AC mains power ideally via a UPS device.
<b>Part No.</b>	<b>101072</b>



<b>Product</b>	<b>Router</b>
<b>Description</b>	The 24 port router allows for multiple nurse call systems to be networked and calls to be repeated between these areas.  One is required per site (per data network)  The router also allows for servers to be connected to the network and additional features can be utilised.
<b>Part No.</b>	<b>100896</b>



<b>Product</b>	<b>Speech SIP Server</b>
<b>Description</b>	The SIP server is designed to enable multi-channel VoIP speech.  The SIP server is provided complete with software suitable for use with the Acelo nurse call system. This item requires 230v AC mains power ideally via a UPS device.
<b>Part No.</b>	<b>100246</b>



<b>Product</b>	<b>Control Unit Fusion-IP Logging Server</b>
<b>Description</b>	<p>Fusion-IP logging server is suitable for use with the Acelo nurse call system. Provides and stores details of nurse call system event logs via the nurse call network.</p> <p>This item requires 230v AC mains power ideally via a UPS device.</p>
<b>Part No.</b>	74833



<b>Product</b>	<b>Messaging Server</b>
<b>Description</b>	<p>The messaging server will be connected onto the Acelo nurse call network and provide messaging from the Acelo nurse call system onto other devices or PCs.</p> <p>This item requires 230v AC mains power ideally via a UPS device.</p>
<b>Part No.</b>	100245



## Spares

Part No.	Product
100804	PCM SM Acelo Local Bus Controller (PCB only)
100999	Plastic Part Acelo 1 Gang Staff & Patient Panel Rear Mounting Plate
101001	Plastic Part Acelo 2 Gang Staff & Patient Panel Rear Mounting Plate
101003	Plastic Part Acelo Pull Cord Insert
101004	Spring Acelo Pull Cord (spring only)
101005	Plastic Part Acelo Pull Cord H Section
101006	Plastic Part Acelo 1 Gang Staff & Patient Panel Locking Bar Insert
101007	Plastic Part Acelo 2 Gang Staff & Patient Panel Locking Bar Insert
101009	Audio Device Speaker Acelo 2 Gang Staff and Patient Panel 36mm 8 Ohm 2 Watt
101037	Plastic Part Acelo Smart Socket Blanking Plug
101051	Plastic Part Acelo Room Status Lens
101052	Acelo Overdoor Divider
101055	Plastic Part Acelo Patient Hand Unit Cradle
101147	Plastic Part Acelo Nurse Station Console Handset Cradle
101149	Wiring Lead Coiled Acelo Nurse Station Console Staff Handset RJ9 to RJ9 White 5m





Where Care Meets Tech

[www.staticsystems.co.uk](http://www.staticsystems.co.uk)  
+44 (0)1902 895 551  
[sales@staticsystems.co.uk](mailto:sales@staticsystems.co.uk)  
© 2024 Static Systems Group Ltd



A **Halma** company